

FOR COMPLIANCE AND SECURITY

As your customers' IT needs increase, the demand for a solution that reduces operating costs and requires less maintenance grows as well. To help them maintain regulatory compliance and a positive security posture, Ingram Micro Seismic Log Manager is the most effective solution on the market today.

As the first cloud-powered log management solution, Seismic Log Manager is designed to remove the financial burden of on-premise solutions. This SaaS offering collects log data via an agentless collection device and provides log storage, reporting, correlation and monitoring. Leveraging our grid computing and storage architecture, customer log data is held in our highly secure redundant data centers.

Why Seismic Log Manager?

For over-regulated and underfunded IT departments, Seismic Log Manager is the perfect cloud security solution to offer to your customers.

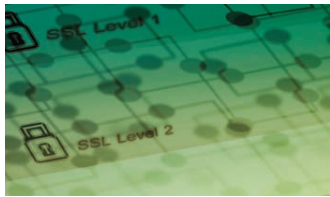
- **Reduce costs** — With no hardware, software or maintenance to purchase, Seismic Log Manager greatly reduces your customers' cost of ownership. We handle all storage, monitoring, maintenance, upgrades and support for you, making it easier for you to manage the solution for them.
- **Effective Log Management** — Help your customers avoid the costs associated with maintaining and operating an on-site log management solution. Our Seismic Log Manager cloud-solution collects, stores, reports and correlates log data in highly secure and redundant data centers.
- **LogReview Service** — Free up your customers' resources by transferring the burden of daily log review and maintaining a PCI DSS-compliant audit trail to our team of certified security analysts.
- **Store** — Our proprietary flat-file architecture allows customer log data to be stored for as long as it is needed, based on either compliance mandates or network security policy. Customers' complete log data is stored uncompressed and is fully searchable to enable easy access.
- **Search** — Full text searching allows for specific log data from both parsed and unparsed log sources to be easily accessed. Our "One-Click-Filtering" feature gives your customers the ability to quickly drill down into log data by selecting parsed messages via hypertext links, which results in automatically creating and applying filters to log data.
- **Report** — Seismic Log Manager allows your customers to create a scheduled report and distribute it to the necessary staff for review. Custom reports allow them to control and review the log data at will.
- **Correlate and Alert** — Our custom and out-of-the-box correlation rules are designed to identify suspicious activity in the log data and alert your customer to possible security threats. Correlation rules automatically review message types for specific properties and fields. If a rule is triggered, your customer will be notified via e-mail.

How It Works

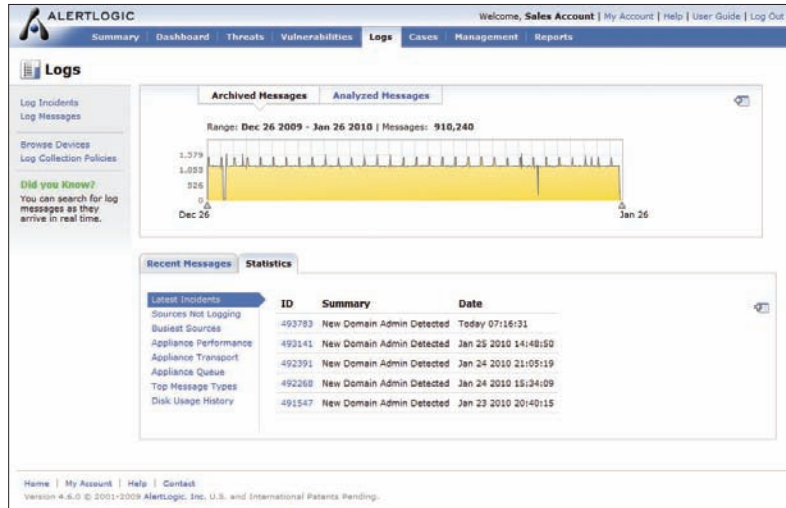
- **Collect** — The Seismic Log Manager collection-appliance device automates syslog and windows log collection in your customers' environments without the use of agents.



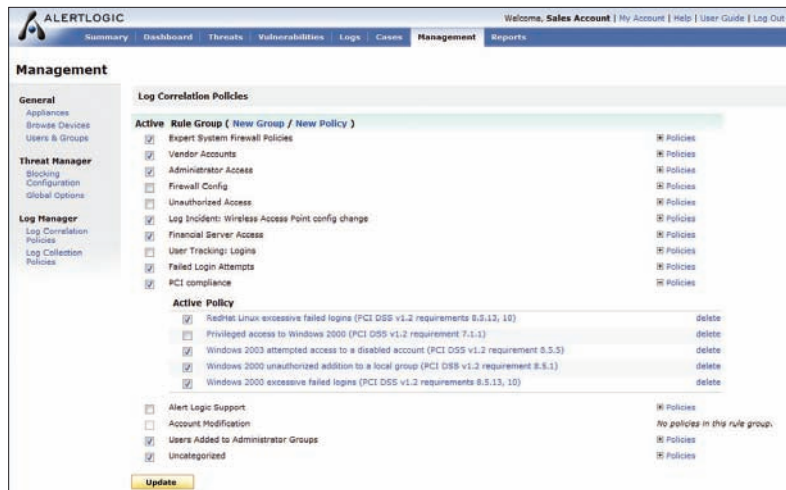
GROWTH INSPIRED — A Bold Vision in Services



Log Manager Powered by Alert Logic



Quickly view log data in the user interface.



Custom and out-of-the-box correlation rules alert you on suspicious activity.

SALES CONTACTS

For more information, visit ingrammicro.com/seismic or call the Ingram Micro Services team at (800) 705-7057, or e-mail saleservices@ingrammicro.com. For the Ingram Micro Services team in Canada, call (877) 755-5002, or e-mail services@ingrammicro.ca.

TECH SUPPORT CONTACT

(800) 466-6563
seismic.support@ingrammicro.com

