

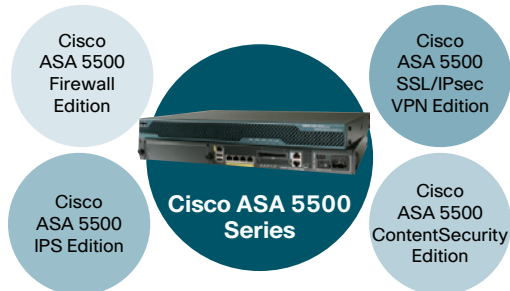


## Cisco ASA 5500 Series Overview

The Cisco® ASA 5500 Series Adaptive Security Appliance is a modular platform that provides the next generation of security and VPN services for environments ranging from small offices/home offices and small and medium-sized businesses to large enterprises. The Cisco ASA 5500 Series offers enterprises a comprehensive portfolio of services that are customized through product editions tailored for firewall, intrusion prevention (IPS), content security, and VPN.

These editions enable superior protection by providing the right services for the right location. Each edition combines a focused set of Cisco ASA services to meet the needs of specific environments within the enterprise network. By meeting the security needs of each location, the overall network security posture is raised.

The Cisco ASA 5500 Series enables standardization on a single platform to reduce the overall operational cost of security. A common environment for configuration simplifies management and reduces training costs for staff, while the common hardware platform of the series reduces sparing costs.

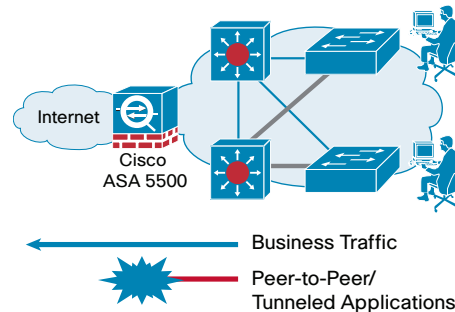


Each edition addresses specific enterprise environment needs:

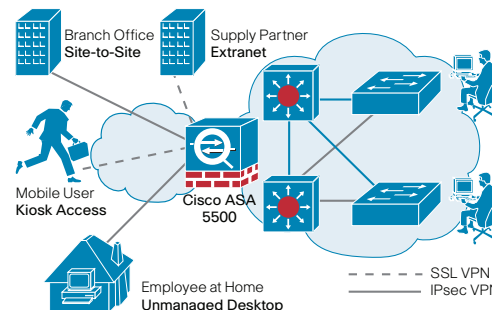
- **Firewall Edition:** Enables businesses to securely and reliably deploy mission-critical applications and networks. A unique, modular design provides significant investment protection and lower operational costs.
- **IPS Edition:** Protects business-critical servers and infrastructure from worms, hackers, and other threats through a combination of firewall, application security, and intrusion prevention services.

- **Content Security Edition:** Protects users at small or remote sites with a comprehensive package of security services. Enterprise-grade firewall and VPN services provide secure connectivity back to the corporate headend. Industry-leading content security services from Trend Micro protect the client system from malicious Websites and content-based threats such as viruses, spyware, and phishing.
- **SSL/IPsec VPN Edition:** Enables secure, remote user access to internal network systems and services, and supports VPN clustering for larger enterprise deployments. Secure Sockets Layer (SSL) and IP Security (IPsec) VPN remote-access technologies combine with threat mitigation technologies such as Cisco Secure Desktop, and with firewall and intrusion prevention services to ensure VPN traffic does not introduce threats to the enterprise.

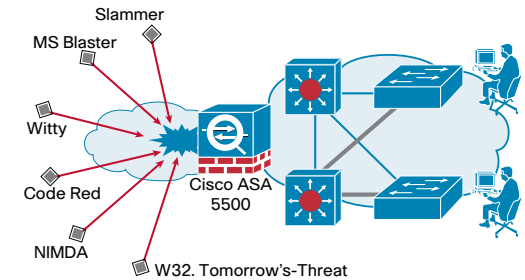
## Market-Leading Application Security



## Threat-Protected SSL and IPsec VPN Services



## Industry-Leading IPS/Content Security Services



## Top 5 Reasons to Purchase Cisco ASA 5500 Series Adaptive Security Appliances

### 1. Trusted Firewall and Threat-Protected VPN Technology

Built upon trusted Cisco PIX® Security Appliance and Cisco VPN 3000 Series Concentrator technology. The Cisco ASA 5500 Series is the first solution to offer SSL and IPsec VPN services protected by market-leading firewall technology.

### 2. Industry-Leading Content Security Services

Combines Trend Micro's expertise in threat protection and content control at the Internet edge with proven Cisco solutions providing comprehensive antivirus, anti-spyware, file blocking, anti-spam, anti-phishing, URL blocking and filtering, and content filtering.

### 3. Advanced Intrusion Prevention Services

Provides proactive, full-featured intrusion prevention services to stop a wide range of threats, including worms, application-layer attacks, operating-system-level attacks, rootkits, spyware, peer-to-peer file sharing, and instant messaging.

### 4. Rich Management and Monitoring Services

Delivers intuitive single-device management and monitoring services through the Cisco Adaptive Security Device Manager (ASDM), and enterprise-class multidevice management services through Cisco Security Management Suite.

### 5. Reduced Deployment and Operations Costs

By providing a design and interface consistent with existing Cisco security solutions, the Cisco ASA 5500 Series enables significantly lower ownership costs for both initial security deployment and day-to-day management.



# Cisco ASA 5500 Series Adaptive Security Appliances

## ACRONYMS

**SSC:** Security Services Card, **SSM:** Security Services Module, **AIP-SSM:** Advanced Inspection and Prevention Security Services Module, **CSC-SSM:** Content Security and Control Security Services Module, **4GE-SSM:** 4 Gigabit Ethernet Security Services Module, **IEC:** Interface Expansion Card,

Cisco ASA 5500 Series Model/License	Cisco ASA 5505 Base / Security Plus <sup>2</sup>	Cisco ASA 5510 Base / Security Plus <sup>2</sup>	Cisco ASA 5520	Cisco ASA 5540	Cisco ASA 5550	Cisco ASA 5580-20	Cisco ASA 5580-40
Market	Branch office/Small Business, Enterprise Teleworker	SMB and Small Enterprise	Small Enterprise	Medium-Sized Enterprise	Large Enterprise	Large Enterprise, Data Center	Large Enterprise, Data Center
<b>Performance Summary</b>							
Maximum Firewall Throughput (Mbps)	150	300	450	650	1200	6500	14000
Maximum 3DES/AES VPN Throughput (Mbps)	100	170	225	325	425	1000	1000
Maximum Site-to-Site and Remote-Access VPN User Sessions	10 / 25	250	750	5000	5000	10000	10000
Maximum SSL VPN User Sessions <sup>1</sup>	25	250	750	2500	5000	10000	10000
Maximum Connections	10000 / 25,000	50,000 / 130,000	280,000	400,000	650,000	1,000,000	2,000,000
Maximum Connections/Second	3000	6000	9000	20,000	28,000	90,000	150,000
Packets per Second (64 byte)	85,000	190,000	320,000	500,000	600,000	3,000,000	5,500,000
<b>Technical Summary</b>							
Memory	256 MB	256 MB	512 MB	1 GB	4 GB	8 GB	12 GB
System Flash	64 MB	64 MB	64 MB	64 MB	64 MB	1 GB	1 GB
Integrated Ports	8 port 10/100 switch with 2 Power over Ethernet ports	5-10/100 / 2-10/100/1000, 3-10/100	4-10/100/1000, 1-10/100	4-10/100/1000, 1-10/100	8-10/100/1000, 1-10/100	2-10/100/1000 Mgmt	2-10/100/1000 Mgmt
Maximum Virtual Interfaces (VLANs)	3 (trunking disabled) / 20 (trunking enabled)	50 / 100	150	200	250	100 (250) <sup>4</sup>	100 (250) <sup>4</sup>
SSC/SSM/IEC Expansion Slot	Yes (1-SSC)	Yes (1-SSM)	Yes (1-SSM))	Yes (1-SSM)	Not Available	Yes (6-IEC)	(6-IEC)
<b>SSC/SSM/IEC Capabilities</b>							
SSC/SSM/IEC Supported	Future, SSC	CSC SSM, AIP SSM, 4GE SSM	CSC SSM, AIP SSM, 4GE SSM	CSC SSM, AIP SSM, 4GE SSM	Not Available	4-10/100/1000, 4-GE SR LC, 2-10GE SR LC	4-10/100/1000, 4-GE SR LC, 2-10GE SR LC
Intrusion Prevention	Not available	Yes (with AIP SSM)	Yes (with AIP SSM)	Yes (with AIP SSM)	Not Available	Not Available	Not Available
Concurrent Threat Mitigation Throughput (Mbps) (Firewall + IPS Services)	Not available	150 (with AIP SSM-10) 300 (with AIP SSM-20)	225 (with AIP SSM-10) 375 (with AIP SSM-20)	450 (with AIP SSM-20)	Not Available	Not Available	Not Available
Content Security (Antivirus, Anti-Spyware, File Blocking, Anti-Spam, Anti-Phishing, and URL Filtering)	Not available	Yes (with CSC SSM)	Yes (with CSC SSM)	Yes (with CSC SSM)	Not Available	Not Available	Not Available
Maximum Number of Users for Antivirus, Anti-Spyware, File Blocking (CSC-SSM Only)	Not available	500 (CSC SSM-10) 1000 (CSC SSM-20)	500 (CSC SSM-10) 1000 (CSC SSM-20)	500 (CSC SSM-10) 1000 (CSC SSM-20)	Not Available	Not Available	Not Available
CSC SSM Plus License Features	Not available	Anti-spam, anti-phishing, URL filtering	Anti-spam, anti-phishing, URL filtering	Anti-spam, anti-phishing, URL filtering	Not Available	Not Available	Not Available
<b>Features</b>							
Application-Layer Security	Yes	Yes	Yes	Yes	Yes	Yes	Yes
Layer 2 Transparent Firewalling	Yes	Yes	Yes	Yes	Yes	Yes	Yes
Security Contexts (Included/Maximum) <sup>2</sup>	0/0	0/0 / 2/5	2/20	2/50	2/50	2/50	2/50
GTP/GPRS Inspection <sup>2</sup>	Not available	Not available	Yes	Yes	Yes	Yes	Yes
High-Availability Support <sup>3</sup>	Not available / Stateless A/S	Not available / A/A and A/S	A/A and A/S	A/A and A/S	A/A and A/S	A/A and A/S	A/A and A/S
VPN Clustering and Load Balancing	Not available	Not available / Yes	Yes	Yes	Yes	Yes	Yes

<sup>1</sup> Beginning with Cisco ASA Software v7.1, SSL VPN (WebVPN) capability requires a license. Systems include 2 SSL VPN users by default for evaluation and remote management purposes

<sup>2</sup> Licensed features

<sup>3</sup> A/S = Active/Standby; A/A = Active/Active

<sup>4</sup> Supported in a future ASA Software release